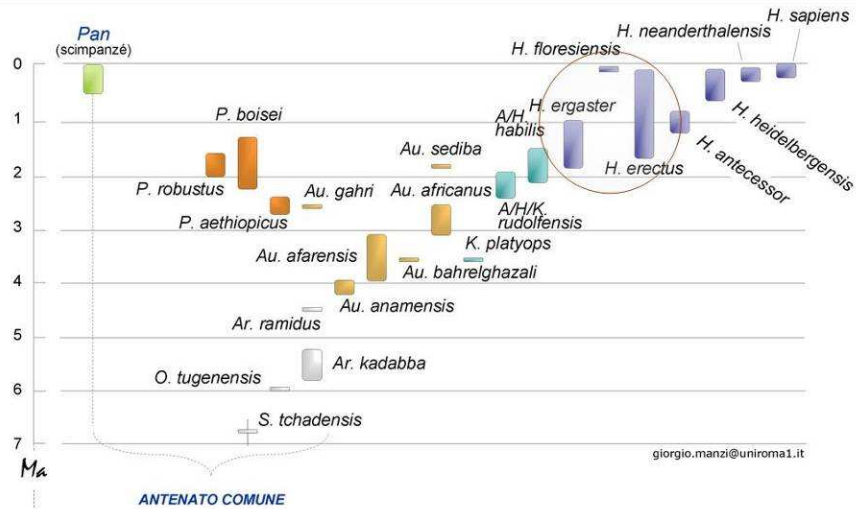


Homo ergaster / erectus



giorgio.manzi@uniroma1.it

Homo erectus - Java

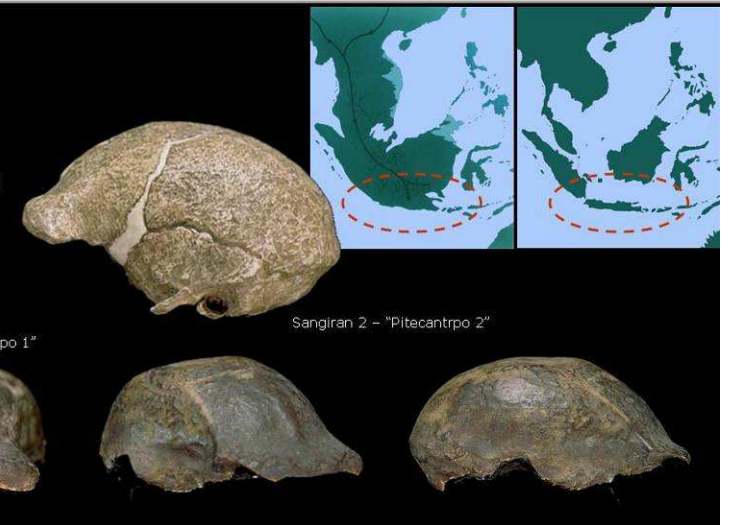
✓ Modjokerto

✓ Sangiran

✓ Trinil

✓ Sambungmacan

✓ Ngandong

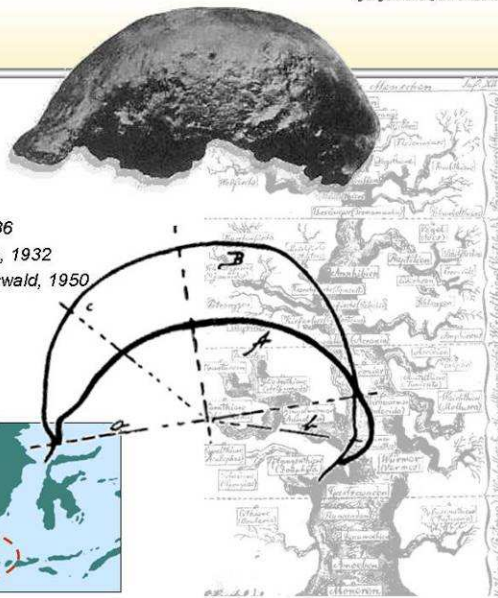


Sangiran 17



Homo erectus (sensu stricto)

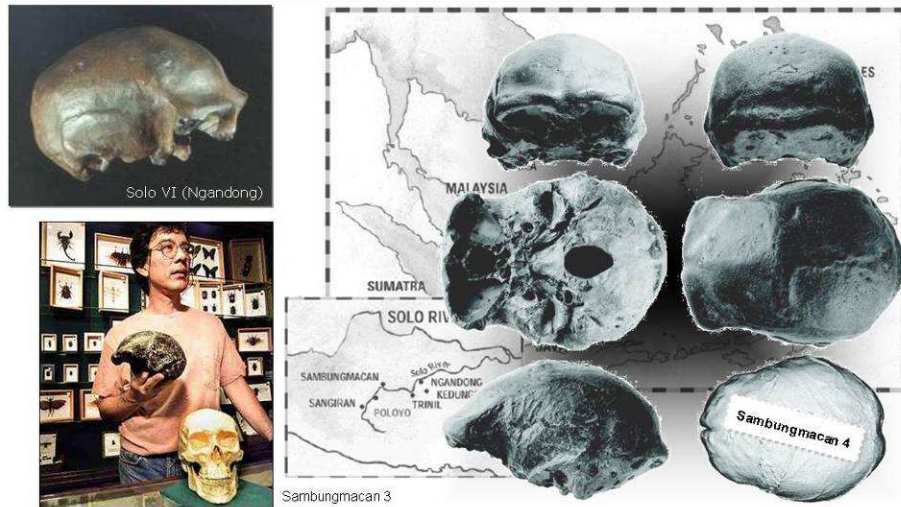
- ✓ *Anthropopithecus erectus* Dubois, 1892
- ✓ *Pithecanthropus erectus* Dubois, 1894
- ✓ *Sinanthropus pekinensis* Black, 1927
- ✓ *Homo modjokertensis* von Koenigswald, 1936
- ✓ *Homo (Javanthropus) soloensis* Oppenoorth, 1932
- ✓ *Meganthropus palaeojavanicus* von Koenigswald, 1950

→ *Homo erectus* (Mayr, 1950)

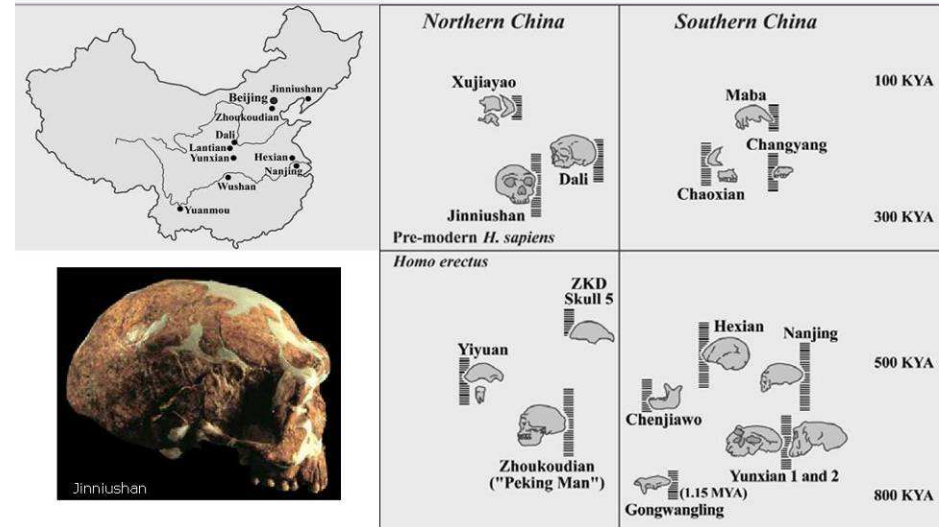
giorgio.manzi@uniroma1.it

giorgio.manzi@uniroma1.it

"Late" Homo erectus



Homo erectus e ... non solo



Homo erectus - Cina

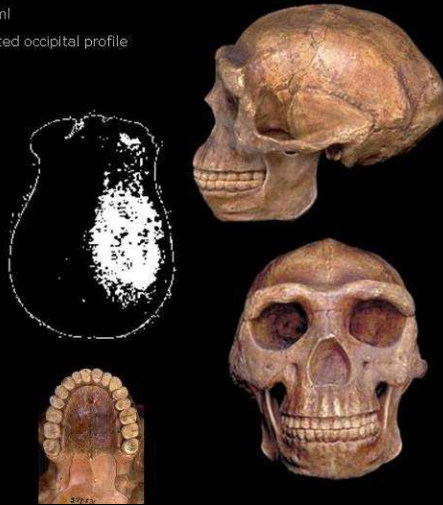


Homo erectus (sensu lato)

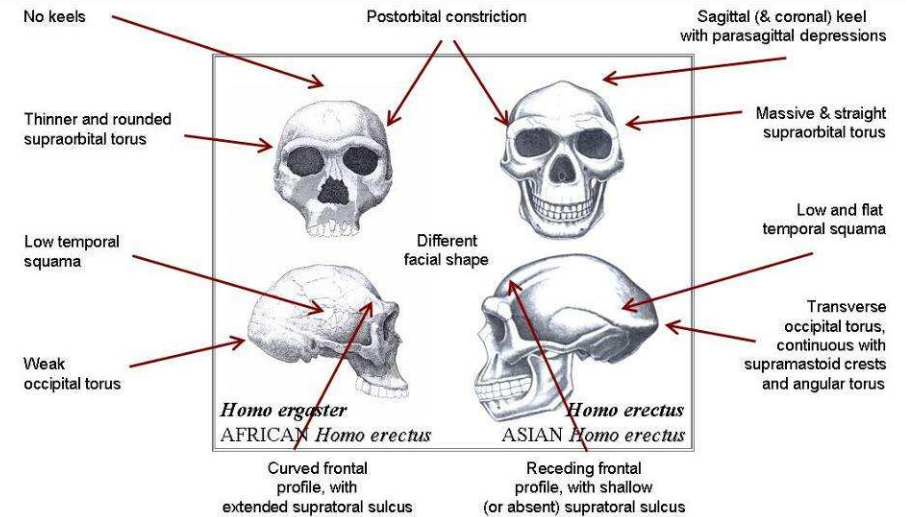


Homo erectus: diagnosi di una specie

- ✓ Long and low cranial vault, with brain size around 1000 ml
- ✓ Opisthocranium coincident with inion, and sharply angulated occipital profile
- ✓ Maximum breadth across the temporal areas (convergent parietal walls)
- ✓ Massive & almost rectilinear supraorbital torus, without glabellar inflexion
- ✓ Receding frontal profile with weak supratoral sulcus
- ✓ Strong postorbital constriction
- ✓ Sagittal (& coronal) keel with parasagittal depressions
- ✓ Transverse occipital torus, continuous with supramastoid crests and angular tori
- ✓ Straight & low temporal squama
- ✓ Supramastoid / suprameatal shelf
- ✓ Non-ossified styloid process
- ✓ Coronal tympanic plate inclination
- ✓ Deep glenoid fossa & high postglenoid projection
- ✓ Large, prognathic, and relatively flat face
- ✓ Thick vault bones

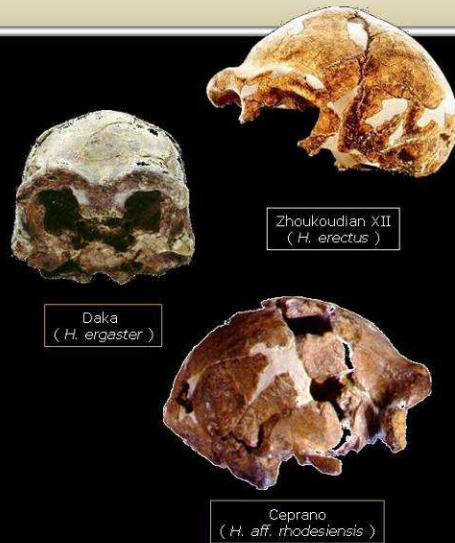


Una specie o due ...?

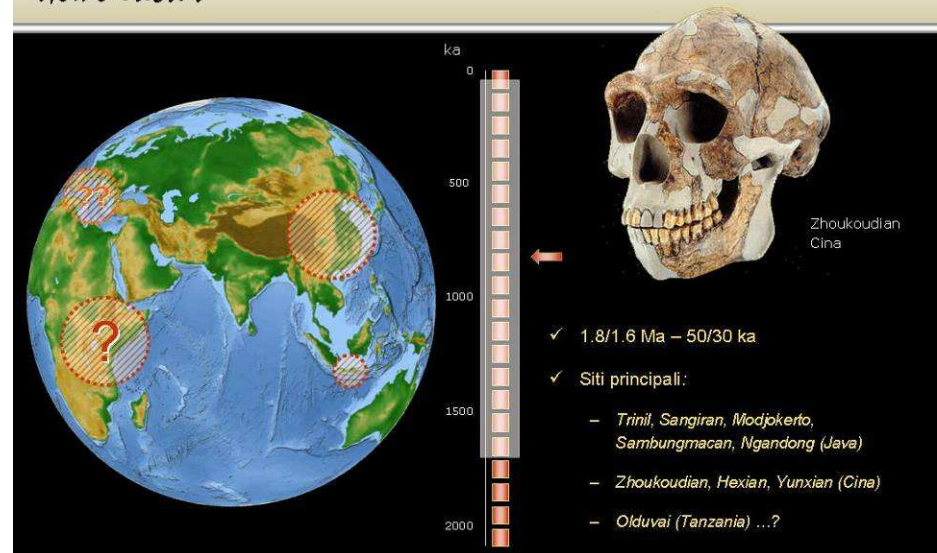


Affinità fenetiche

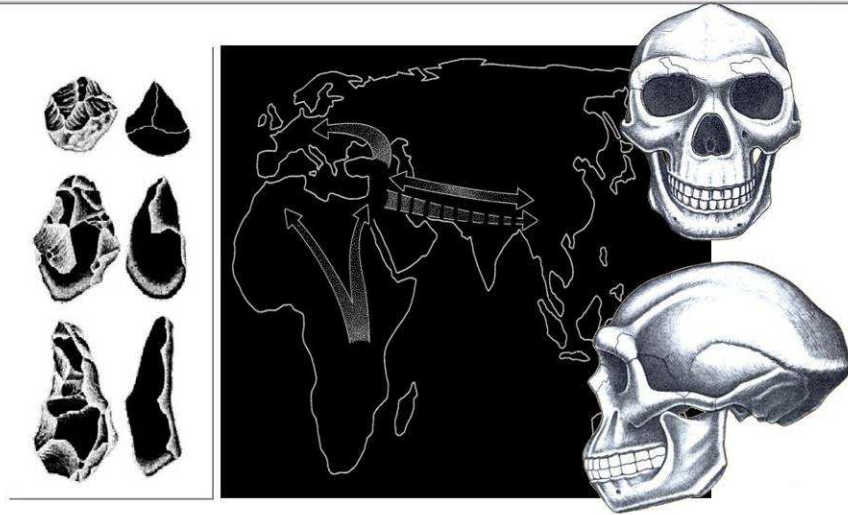
Zkd. X	H. erectus s.s.	.800
Zkd. III	H. erectus s.s.	.767
Zkd. XI	H. erectus s.s.	.767
Sang. 2	H. erectus s.s.	.750
Sang. 17	H. erectus s.s.	.733
Zkd. XII	H. erectus s.s.	.700
D2280	H. ergaster	.679
OH9	H. erectus s.l.	.621
Kabwe	archaic Homo	.621
Solo VI	H. erectus s.l.	.621
D2282	H. ergaster	.600
Ceprano	archaic Homo	.567
Bodo	archaic Homo	.563
Arago	archaic Homo	.563
Saldanha	archaic Homo	.524
Petralona	archaic Homo	.519
ER 3733	H. ergaster	.500
AT-SH C.4	archaic Homo	.500
AT-SH C.5	archaic Homo	.500
ER 3883	H. ergaster	.433
Daka	H. ergaster	.393
Steinheim	archaic Homo	.333



Homo erectus

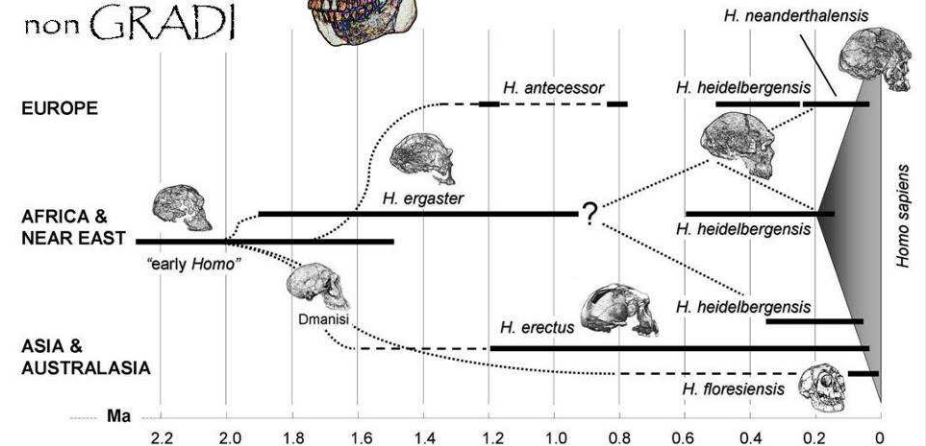


C'era una volta ... *Homo erectus*



Il genere *Homo*

CLADI
non GRADI



Il paradigma della specie unica (anagenesi)

